

SEVENCRAANE

Henan Seven Industry Co.,Ltd

Address: Changyuan, Xinxiang City, Henan province, China.

Email: info@sevencrane.com

Tel: (00)86-371-55576206

Web: www.sevencrane.com

Henan Seven Industry Co.,Ltd

Double Girder Overhead Crane



SEVENCRAANE

Company profile

SEVENCRANE (Henan Seven Industry Co., Ltd) offers our customers with reliable, safe and high-performance solutions for industrial cranes, crane components and drives. SEVENCRANE serves a wide range of industries including machinery, metallurgy, power industry, railways, water conservancy, ports, mines, coal, petroleum, chemical industries, etc.

SEVENCRANE stands for first-rate service, cost-effective, high quality. Based on our brand commitment, we provide butler-style services to our customers at all stages, and fully consider the solutions for the purchase, production, transportation, installation and after-sale process of cranes.

Our customers appreciate our reliability and professionalism. Our sales staffs are trained in professional crane knowledge and customers can communicate with them on technical issues directly.

Values and vision

SEVENCRANE is committed to the highest efficiency, best results and best service. Choose SEVENCRANE to give you peace of mind and focus on your business.

Our core values: First class service—Safety—Efficient—Reliable

" Tell sevenscrane your needs and leave the rest to us. "

Business area

Spare parts and service	Industrial cranes
SEVENCRANE provides components and maintenance services for all types of cranes to help customers increase productivity and perform crane maintenance or assembly.	SEVENCRANE serves a wide range of industries including machinery, metallurgy, power industry, railways, water conservancy, ports, mines, coal, petroleum, chemical industries, etc. We offer cranes, solutions of crane and material handling solutions to a wide range of customers.
Product: SEVENCRANE can provide: Rail system, Bus bar, Remote control, Wire rope, All kinds of hook block, Wheels, Couplings, Drums, Buffers, End carriage, Pulley, Grab buckets, Crane magnet. We also provide crane system design, crane installation and training for our customers, and have perfect after-sales service.	Product: SEVENCRANE provide customers in various industries: Gantry crane, Bridge crane, Jib crane, Electric hoist, Winch, European type crane.

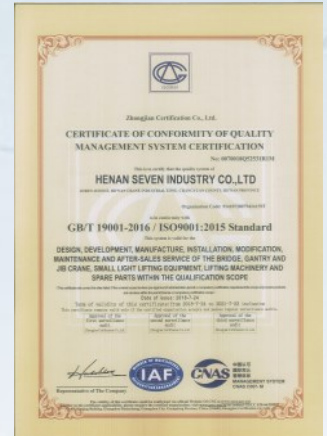
Qualification Certificate



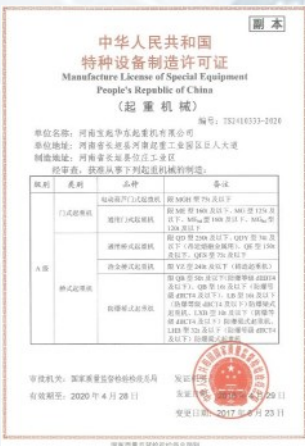
IOS certificate occupational and health



ISO certificate environment



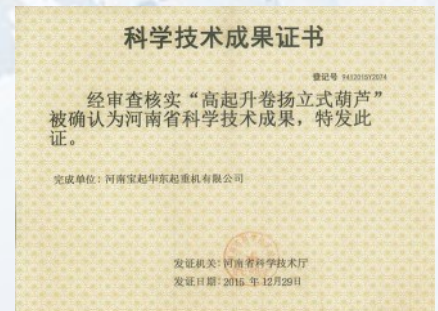
ISO certificate quality



Special equipment manufacturing certificate



China heavy machinery industry association-Membership certificate



Certificate of scientific and technological achievements



Safety mark certificate for mineral products



Abide by the contract honor enterprise



Safety production license

Double girder overhead crane



Overview

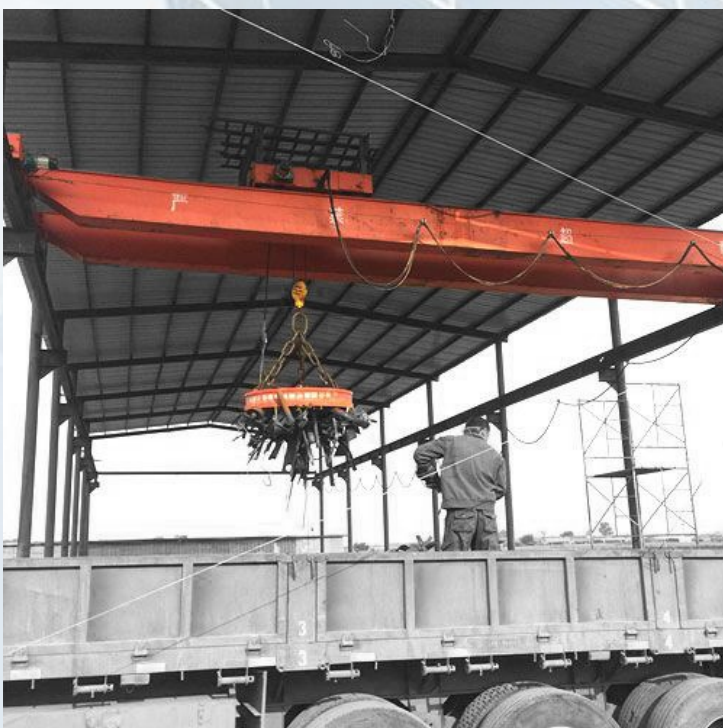
Double girder overhead cranes are used for high-rise building construction, construction of large-scale vessels of 10,000-ton class, construction and installation of large-scale power stations, handling of large-scale heavy components. The bridge crane can not only be used as an auxiliary production equipment, but also completes the loading and unloading of raw materials and semi-finished products, carries out the lifting and installation of electromechanical equipment and hull sections, and is also an essential equipment in some production processes and process operations.

Specification

1. Load capacity: 5 tons~500 tons
2. Crane span: 4.5m~31.5m
3. Lifting height: 3m~30m or according to customer request
4. Working duty: A4~A7
5. Power source: 380v/400v/415v/440v/460v, 50hz/60hz, 3 phase

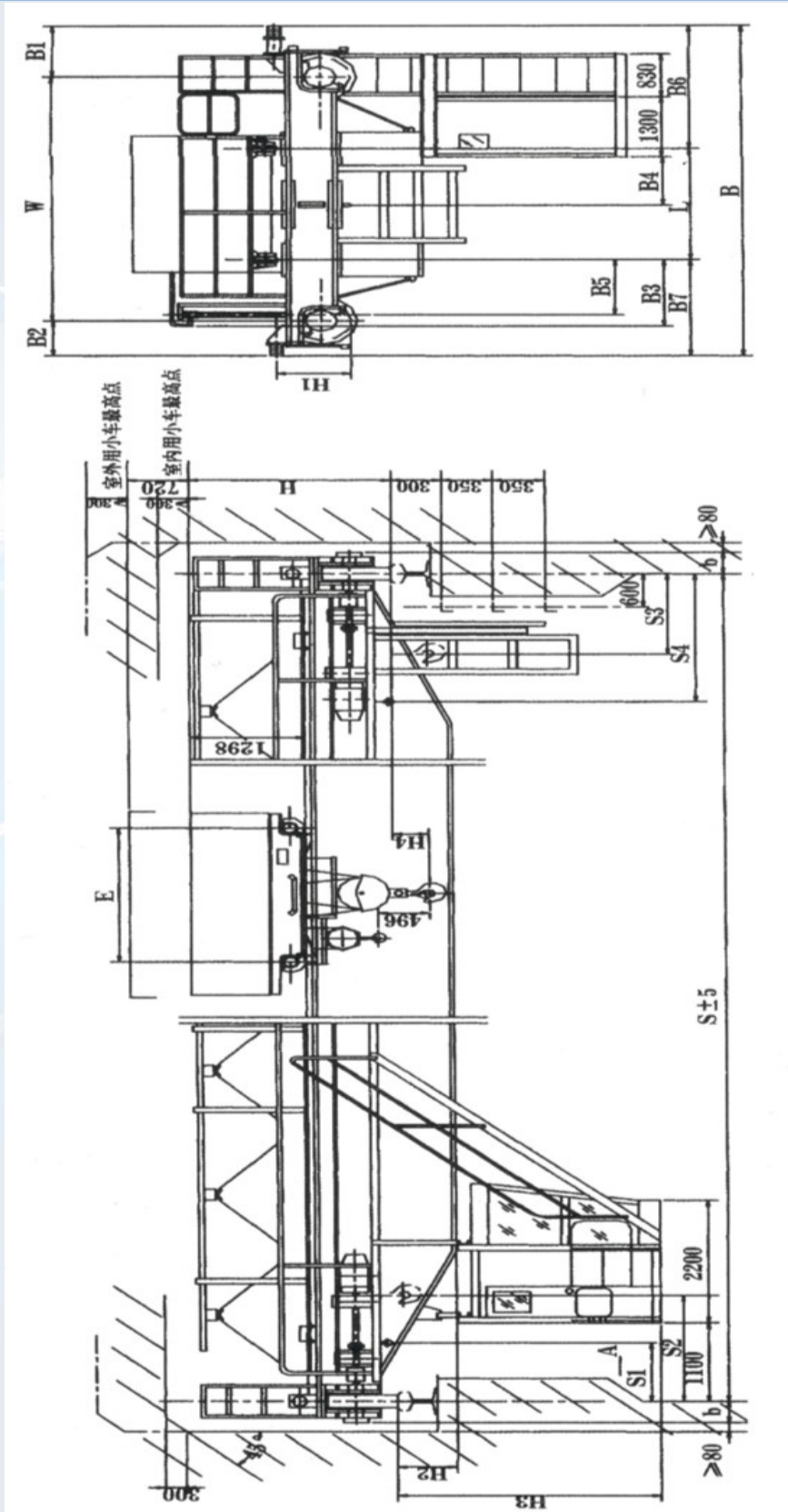


In the smelting metal industry production, with the electromagnetic suction cup or grab spreader for furnace preparation, feeding and other work, including steel casting, stripping and taking the ingot must rely on double-girder crane for production operations.



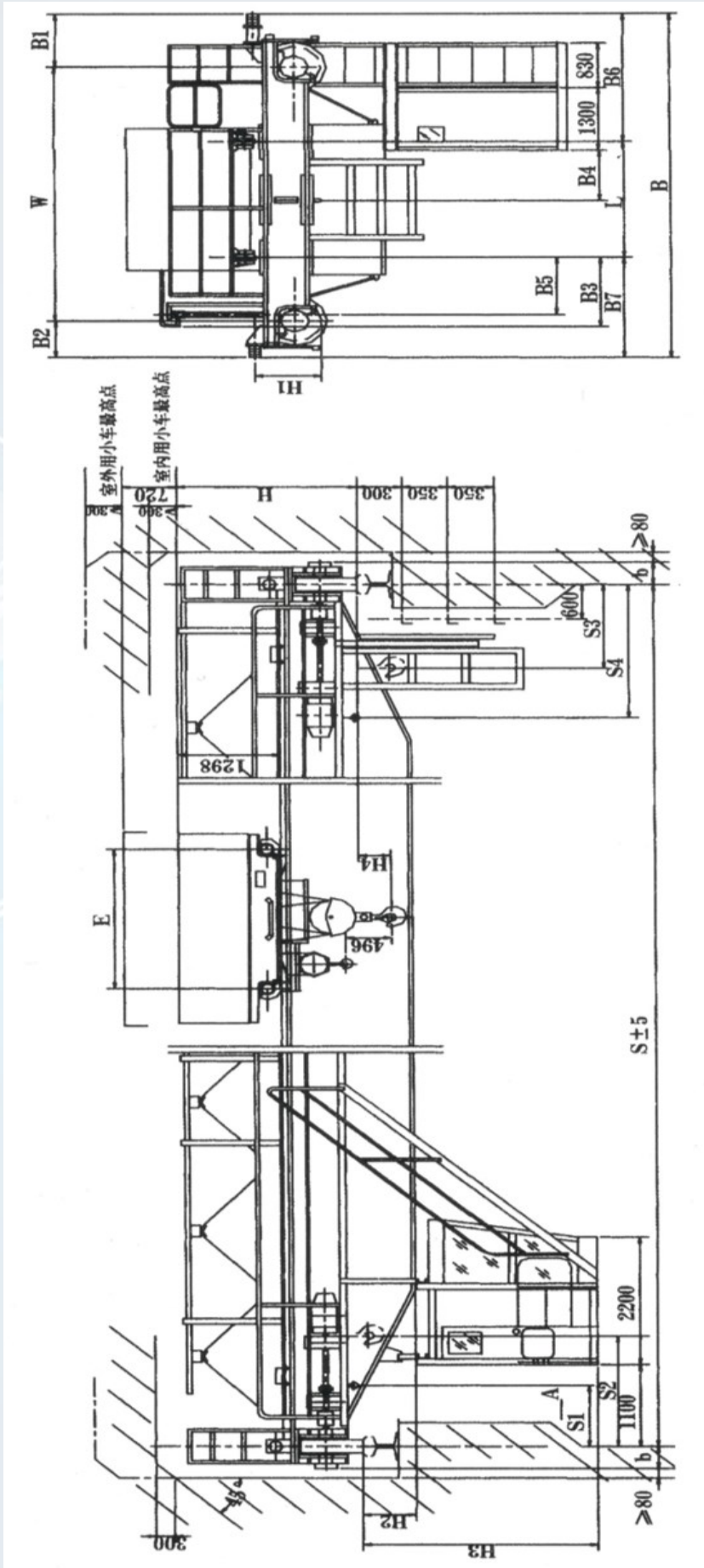
DOUBLE-GIRDER OVERHEAD CRANE

5T/10T-GENERAL DRAWING



起重量 Lifting capacity		t	5									10/3.2																				
跨度 Span		m	10.5	13.5	16.5	19.5	22.5	25.5	28.5	31.5	10.5	13.5	16.5	19.5	22.5	25.5	28.5	31.5														
最大起升高度 Max lifting height	主钩 Main hook		16									16																				
	速度 Speed	起升 Hoisting	主起升 Main lifting	A5		9.3									8.5																	
		A6	12.9									10.4																				
小车运行 Crab travelling				37.2									43.8																			
大车运行 Trolley travelling		A5		70				70				72			72			87														
		A6		92				93				93			93			86														
电动机 Motor	起升 Hoisting	主起升 Main lifting	A5		YZR180L-8/13									YZR180L-6/17																		
			A6		YZR180L-6/15									YZR200L-6/22																		
	小车运行 Crab travelling		Type		YZR132M ₁ -6/2.5									YZR132M ₁ -6/2.5																		
	大车运行 Trolley travelling		A5		YZR132M2-6/4				YZR160M1-6/6.3				YZR132M2-6/4			YZR160M1-6/6.3																
		A6		YZR160M1-6/5.5				YZR160M2-6/7.5				YZR160M1-6/5.5			YZR160M2-6/7.5																	
主要尺寸 mm Main dimensions		A5		B	5050				5200				6024				5700				5930				6284							
				W	3400				3550				5000				4050				5000											
				B1	1140								512				1140				1250				772							
				B2	510								512				510				630				512							
				B3	1335	1385	1435	1435	1535	1360	1410	1485																				
				B4	540	545	550	595	620	645	670	865	870	875	920	945	970															
				B5	1136	1161	1186	1211	1236	1311	1336	1181	1206	1231	1256	1281	1306															
				B6	2140				2215				2262				2165				2275				2272							
				B7	1510				1585				2262				1535				1655				2012							
				S1	800								1050																			
				S2	1250								1300																			
				L	1400±2								2000±2																			
				E	1100								1400																			
				H	1764								1876				1926															
				H1	765+H0				800+H0				765+H0				815+H0															
				H2	-24	126	226	376	526	676	826	976	-24	126	226	376	526	628	778	928												
				H3	2526	2546	2596	2756	2906	3056	3206	3356	2526	2546	2596	2756	2906	3008	3158	3308												
				H4	71								602				552															
				主要尺寸 mm Main dimensions		A6		B	5150				5204				6264				5074				5934				6504			
								W	3400				3550				5000				4050				5000							
B1	1190								1142				1142				1252				872											
B2	560								512				632				512				632											
B3	1335	1385	1435					1435	1535	1360	1410	1485																				
B4	540	545	550					595	620	645	670	865	870	875	920	945	970															
B5	1136	1161	1186					1211	1236	1311	1336	1181	1206	1231	1256	1281	1306															
B6	2190							2217				2382				2167				2277				2372								
B7	1560							1587				2382				1537				1657				2132								
S1	800								1050																							
S2	1250								1300																							
L	1400±2								2000±2																							
E	1100								1400																							
H	1764								1876				1926																			
H1	765+H0							800+H0				800+H0				850+H0																
H2	-24	126	226					376	526	676	826	976	-24	126	226	376	526	628	778	928												
H3	2526	2546	2596					2576	2906	3056	3206	3356	2526	2546	2596	2756	2906	3008	3158	3308												
H4	71								602				552																			
重量 Weight		小车 Crab						A5	2126									3424														
		A6						2224									3562															
总重 Total weight		A5		12461	14184	15911	18640	21081	25527	28657	31593	17230	18889	21565	23472	26085	30516	33804	37517													
		A6		12978	14747	16532	19283	21761	27137	30304	32276	17646	19351	22084	24396	27045	31803	35129	38247													
最大轮压 Max wheel load		A5		74	79	85	92	98	110	118	125	102	109	118	123	130	142	151	160													
		A6		75	80	86	93	100	111	119	126	104	111	120	125	132	144	152	162													
荐用钢轨 Steel track recommended		小车 Crab		18																												
		大车 Trolley		43																												
电源 Power source		三相交流 380V 50Hz 3-Phase A.C. 380V 50Hz																														

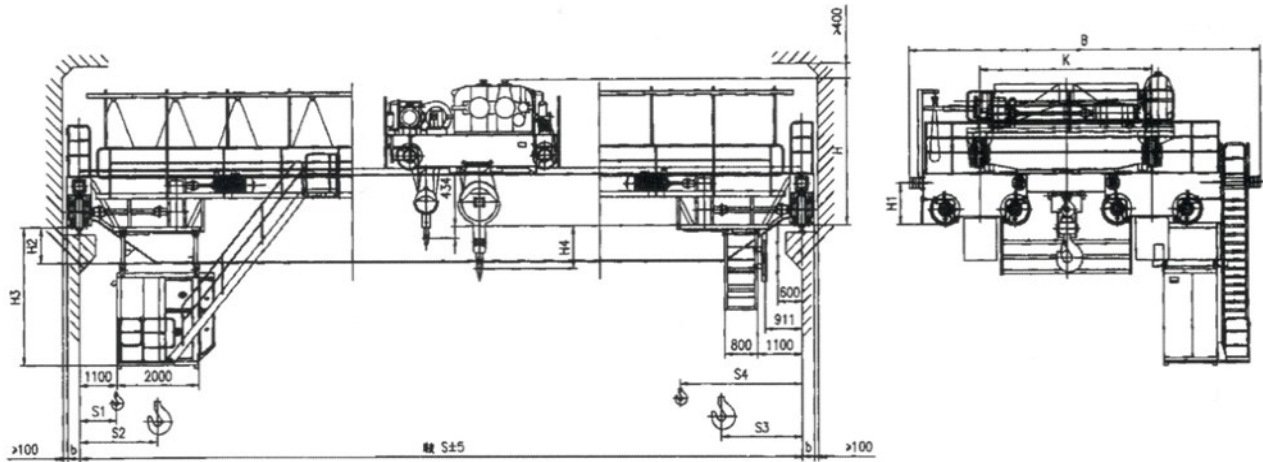
16/3.2T+20/5T-GENERAL DRAWING



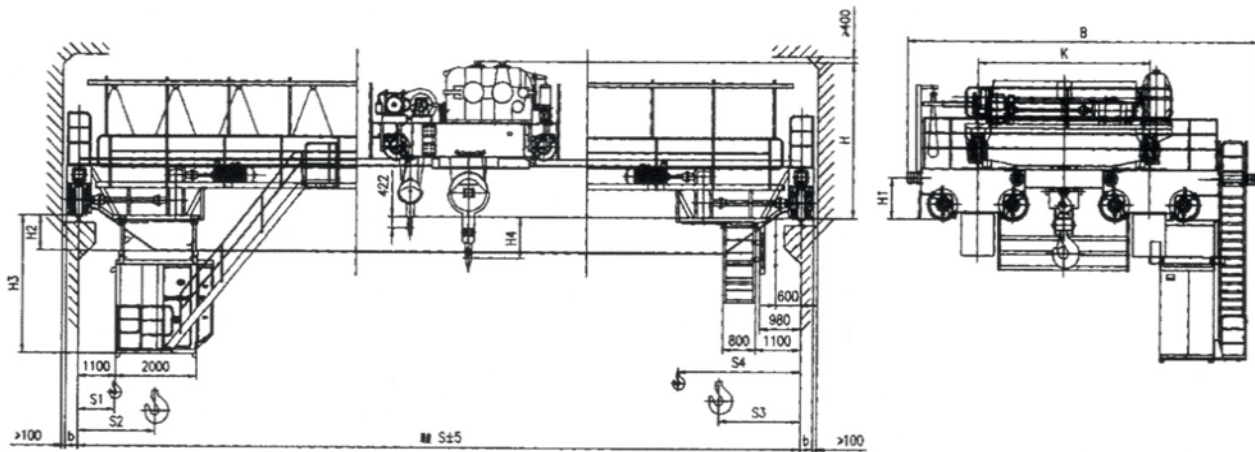
起重量 Lifting capacity		t	16/3.2							20/5												
跨度 Span			10.5	13.5	16.5	19.5	22.5	25.5	28.5	31.5	10.5	13.5	16.5	19.5	22.5	25.5	28.5	31.5				
最大起升高度 Max lifting height	主钩 Main hook	m	16							12												
	副钩 Aux hook		18							14												
速度 Speed	起升 Hoisting	主起升 Main lifting	7.9							7.2												
			副起升 Aux lifting	10.7							9.6											
	小车运行 Crab travelling			10.3							12.5											
	大车运行 Trolley travelling		A5	74			65				84.7			87.6								
		A6	86			89				86			89									
电动机 Motor	起升 Hoisting	主起升 Main lifting	YZR225M-8/26							YZR225M-8/26												
			副起升 Aux lifting	YZR250M1-6/37							YZR250M2-6/45											
	小车运行 Crab travelling			YZR180L-8/13							YZR180L-6/17											
	大车运行 Trolley travelling		A5	YZR132M2-6/4			YZR160M1-6/6.3				YZR160M2-6/8.5			YZR160M1-6/6.3								
		A6	YZR160M2-6/7.5			YZR160L-6/11				YZR160M2-6/7.5			YZR160L-6/11									
主要尺寸 mm Main dimensions		A5	B	5940			5944				6434			5940			5944				6434	
			W	4000			4100				5000			4000			4100				5000	
			B1	1230			1182				817			1230			1182				817	
			B2	710			662				617			710			662				617	
			B3	1490			1565				1490			1565								
			B4	870	895	920	945	970	870	895	920	945	970	870	895	920	945	970				
			B5	1256	1281	1306	1331	1356	1256	1281	1306	1331	1356	1256	1281	1306	1331	1356				
			B6	2230			2232				2317			2230			2232				2317	
			B7	1710			1712				2117			1710			1712				2117	
			S1	1040			1040				1030			1030								
			S2	1850			1850				1900			1900								
			S3	1500			1500				1450			1450								
			S4	2310			2310				2320			2320								
			B	230			260				230			260								
			L	2000 ± 2			2000 ± 2				2000 ± 2			2000 ± 2								
			E	2400			2400				2400			2400								
			H	2095			2185				2097			2187								
			H1	850+H0			940+H0				850+H0			940+H0								
			H2	80	180	240	388	538	688	838	80	82	182	242	390	540	690	840				
			H3	2520	2550	2620	2768	2918	3068	3218	2520	2522	2522	2622	2770	2920	3070	3220				
			H4	729	639			701			611											
			A6	B	6274			7004				6274			7004							
				W	4400			5000				4400			5000							
				B1	1262			1317				1262			1317							
				B2	612			687				612			687							
				B3	1490			1565				1490			1565							
				B4	1075	1100	1080	1105	1380	1405	1075	1100	1080	1105	1380	1405						
				B5	1256	1281	1306	1331	1356	1256	1281	1306	1331	1356	1256	1281	1306	1331	1356			
B6	2462			2817				2462			2817											
B7	1812			2187				1812			2187											
S1	1040			1030				1030			1030											
S2	1850			1900				1900			1900											
S3	1500			1450				1450			1450											
S4	2310			2320				2320			2320											
b	230			260				230			260											
L	2000 ± 2			2000 ± 2				2000 ± 2			2000 ± 2											
E	2400			2400				2400			2400											
H	2095	2097		2187	2185			2097	2099	2189												
H1	850+H0			940+H0				850+H0			940+H0											
H2	80	180		240	390	540	690	840	80	84	184	244	392	542	692	842						
H3	2570	2550		2620	2770	2920	3070	3220	2570	2574	2554	2624	2772	2922	3072	3222						
H4	729	727		637	639			701	699	609												
重量 Weight	小车 Crab	A5		6227							6856											
		A6		6427							7180											
	总重 Total weight	A5		19157	20601	22646	26960	29400	33687	36959	40117	19986	21657	23816	28316	30919	35264	38949	42196			
		A6		20086	22189	24438	28713	31294	35356	38987	42287	20932	23617	25966	30512	33319	37605	41642	45216			
最大轮压 Max wheel load	A5	141		148	155	168	175	187	196	205	163	169	178	191	199	211	222	231				
	A6	145		152	160	172	180	191	201	211	167	174	183	197	205	218	229	239				
荐用钢轨 Steel track recommended	小车 Crab	kg/m		24																		
	大车 Trolley		43a或QU70																			
电源 Power source			三相交流 380V 50Hz 3-Phase A.C. 380V 50Hz																			

起重量 Lifting capacity		t		25/5											
跨度 Span		m		10.5	13.5	16.5	19.5	22.5	25.5	28.5	31.5				
最大起升高度 Max lifting height	主钩 Main hook			12(A5)/11(A6)											
	副钩 Aux hook			14(A5)/13(A6)											
速度 Speed	起升 Hoisting	主起升 Main lifting	A5	7.3											
			A6	9.8											
	副起升 Aux lifting			12.7											
	小车运行 Crab travelling			37											
大车运行 Trolley travelling			65				74								
			91				89								
电动机 Motor	起升 Hoisting	主起升 Main lifting	A5	YZR250M1-8/35											
			A6	YZR250M2-6/45											
	副起升 Aux lifting			YZR160L-6/13											
	小车运行 Crab travelling			YZR160M,-6/6.3											
大车运行 Trolley travelling			YZR160M2-6/8.5				YZR160L-6/13								
			YZR160L-6/11				YZR160L-6/11								
主要尺寸 mm Main dimensions		A5		B	5940			5944		6434					
				W	4000			4100		5000					
				B1	1230			1182		817					
				B2	710			662		617					
				B3	1490			1565							
				B4	870	895		920	945		970				
				B5	1256	1281		1306	1331		1356				
				B6	2230			2232		2317					
				B7	1710			1712		2117					
				S1				1030							
				S2				1900							
				S3				1450							
				S4				2320							
				B	230			260							
				L				2000 ± 2							
				E				2400							
		H	2099			2189									
		H1	850+H0			940+H0									
		H2	82	84	184	244	392	542	688	842					
		H3	2522	2524	2554	2624	2772	2922	3072	3222					
		H4	6999			609									
		A6				b	6274					7004			
						W	4400					5000			
						B1	1262					1317			
						B2	612					687			
						B3	1490			1565					
						B4	1075	1100		1080	1105	1380	1405		
						B5	1256	1281		1306	1331		1356		
						B6	2462					2817			
						B7	1812					2187			
						S1				1030					
						S2				1900					
S3						1450									
S4						2320									
b	230					260									
L						2000 ± 2									
E						2400									
H	2099	2101		2191											
H1	850+H0			940+H0											
H2	82	86	186	246	394	544	694	844							
H3	2572	2576	2556	2626	2774	2924	5074	3224							
H4	699	697		607											
重量 Weight		小车 Crab	A5	7185											
			A6	7856											
		总重 Total weight	A5	20795	22248	24478	28715	31386	35803	39586	42796				
	A6	22632	24475	26927	31499	34319	38736	42632	46324						
最大轮压 Max wheel load		A5		185	191	199	214	222	234	246	255				
		A6		189	196	205	220	228	241	253	263				
荐用钢轨 Steel track recommended	小车 Crab			24											
	大车 Trolley			43a或QU70											
电源 Power source				三相交流 380V 50Hz 3-Phase A.C. 380V 50Hz											

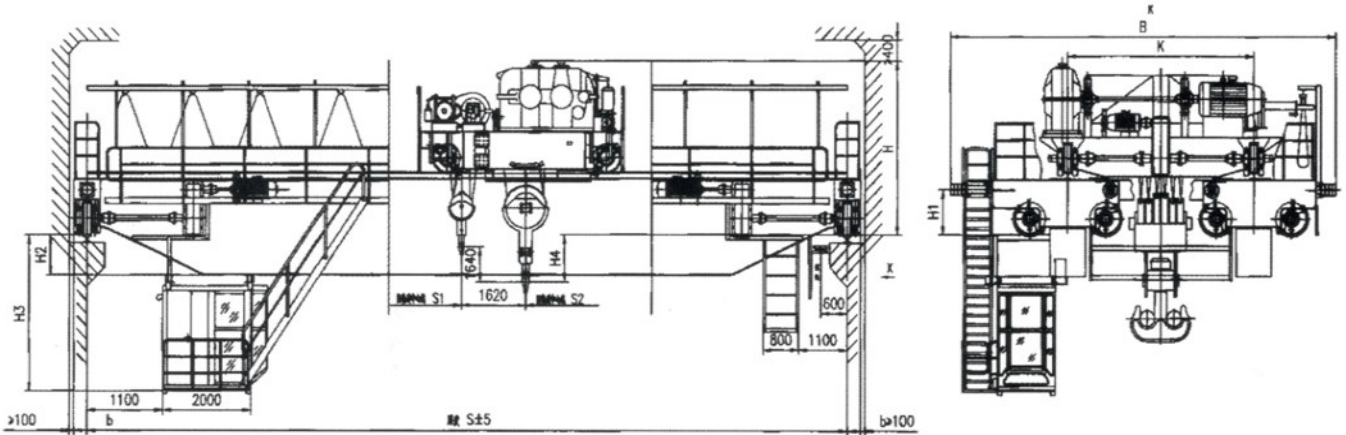
起重量 Lifting capacity		t		32/5								50/10															
跨度 Span		m		10.5	13.5	16.5	19.5	22.5	25.5	28.5	31.5	10.5	13.5	16.5	19.5	22.5	25.5	28.5	31.5								
最大起升高度 Max lifting height	主钩 Main hook	16																									
	副钩 Aux hook	18																									
速度 Speed	起升 Hoisting	主起升 Main lifting	A5	7.5																							
		副起升 Aux lifting	A6	5.9																							
	小车运行 Crab travelling		m/min	12.6																							
	大车运行 Trolley travelling		A5	65				89				89				74.6				85.9							
		A6	91				91				86.8				91				87.3								
电动机 Motor	起升 Hoisting	主起升 Main lifting	A5	YZR280S-10/42																							
		副起升 Aux lifting	A6	YZR280M-8/55																							
	小车运行 Crab travelling		Type	YZR180L-6/17																							
	大车运行 Trolley travelling		A5	YZR160MI-6/6.3																							
		A6	YZR160M2-6/8.5				YZR160L-6/13				YZR160L-6/13				YZR180L-8/13												
			YZR160L-6/11				YZR180L-8/11				YZR180L-8/11				YZR200L-8/15												
主要尺寸 mm Main dimensions		A5	B	6474				6620				6924				6724				6824				7144			
			W	4650				4700				5000				4800				5000							
			B1	1212				1260				1262				1262				1312				1362			
			B2	612				660				662				662				712				782			
			B3	1540				1590				1590				1590				1590							
			B4	1205		1230		1255		1380		1405		1325		1305		1330		1355		1380		1405			
			B5	1281		1306		1331		1356		1381		1281		1306		1331		1356		1381		1381			
			B6	2287				2360				2512				2412				2462				2612			
			B7	1687				1760				1912				1812				1862				2032			
			S1	1070				1070				1050				1050				1050							
			S2	2050				2050				2005				2005				2005							
			S3	1700				1700				2200				2200				2200							
			S4	2680				2680				3195				3195				3195							
			b	260				300				300				300				300							
			L	2500 ± 2				2500 ± 2				2500 ± 2				2500 ± 2				2500 ± 2							
			E	2800				2800				3580				3580				3580							
			H	2343		2345		2475				2726				2732											
			H1	940+H0				1035+H0				1070+H0				1090+H0											
			H2	90	94	244	264	414	564	714	814	-79	96	102	252	402	552	702	802								
			H3	2520	2524	2614	2644	2794	2944	3094	3194	2531	2526	2532	2632	2782	2932	3082	3182								
			H4	705	701		571				1020				1014												
			A6	B	6574				6744				7044				6944				7024						
				W	4650				4700				5000				4800				5000						
				B1	1262				1312				1362				1362				1312						
B2	662				732				782				782				712										
B3	1540				1590				1540				1590														
B4	1205			1230		1255		1380		1405		1325		1305		1330		1335		1380		1405					
B5	1381			1406		1431		1456		1481		1281		1306		1306		1331		1356		1381					
B6	2337				2412				2562				2512				2562										
B7	1737				1832				1982				1932				1962										
S1	1070				1070				1005				1005				1005										
S2	2050				2050				2200				2200				2200										
S3	1700				1700				2000				2000				2000										
S4	2680				2680				3195				3195				3195										
b	260				300				300				300				300										
L	2500 ± 2				2500 ± 2				2500 ± 2				2500 ± 2				2500 ± 2										
E	2800				2800				3580				3580				3580										
H	2343			2347		2477				2726				2728				2734									
H1	940+H0				1070+H0				1090+H0				1130+H0														
H2	90	96		246	266	416	566	716	816	-97	98	104	254	404	554	704	804										
H3	2580	2586		2616	2426	2796	2946	3096	3196	2531	2528	2534	2634	2784	2934	3084	3184										
H4	703	699		569				571				1012															
重量 Weight	小车 Crab	A5		10877																							
		A6		11625																							
	总重 Total weight	A5		26954	29718	32707	37331	40716	45694	49440	53449	35711	38864	43158	47317	51266	56820	60821	66130								
	A6	27409	30893	34011	39058	42331	47599	51097	55646	39077	42731	47164	51353	55382	61109	65227	70776										
最大轮压 Max wheel load	A5	A5	237	250	262	275	289	305	317	327	333	354	373	385	404	421	434	450									
		A6	242	255	268	285	299	312	322	335	335	357	377	395	410	428	441	457									
荐用钢轨 Steel track recommended	小车 Crab	43																									
	大车 Trolley	QU70或方钢90								QU80或方钢100																	
电源 Power source		三相交流 380V 50Hz 3-Phase A.C. 380V 50Hz																									



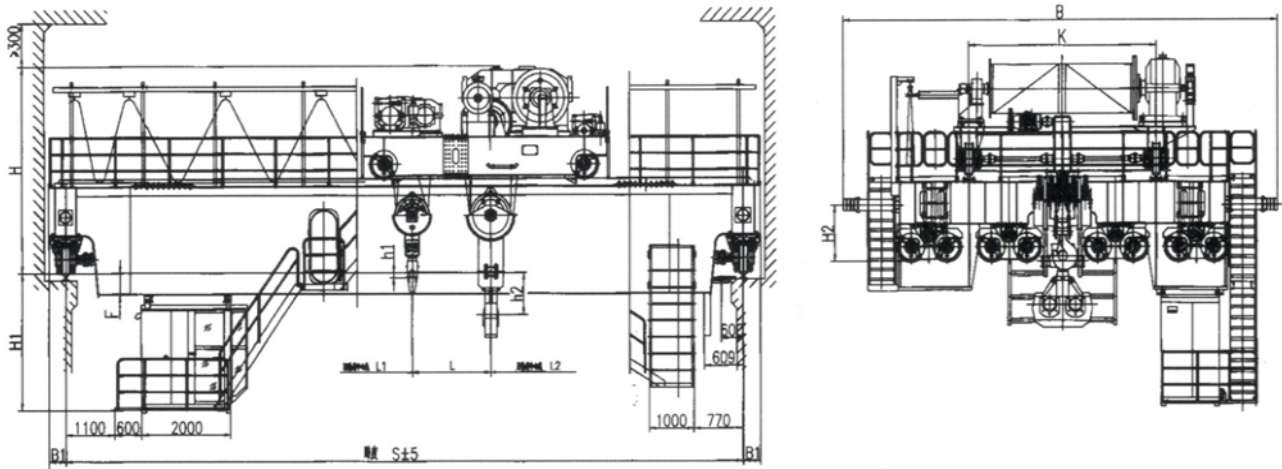
起重量 Cap	主钩 Main	t	70													
	副钩 Aux.		20													
跨度 Span			13.5	16.5	19.5	22.5	25.5	28.5	31.5	13.5	16.5	19.5	22.5	25.5	28.5	31.5
起升高度 Lifting Height	主钩 Main	m	20													
	副钩 Aux.		22													
工作制度 Duty			A5							A6						
速度 Speed	主起升 Main	m/ min	38							5						
	副起升 Aux		7.2													
	小车运行 Crab travelling		38.4													
	大车运行 trolley travelling		53.9							77.8				67		
极限尺寸 limit dimension	S1		1015													
	S2		3260													
	S3		2475													
	S4		3720													
主要尺寸 Main dimension	H	mm	3302	3302	3306	3304	3308	3310	3302	3304	3308	3306	3310	3312		
	H1		950													
	H2		290	440	542	546	844	844	850	292	442	544	548	846	850	852
	H3		2710	2860	2962	2966	3264	3268	3270	2712	2862	2964	2968	3266	3270	3272
	H4		872	872	868	870	866	864	870	868	864	866	862	860		
	K		4400													
	B		8828													
	b		300													
最大轮压 Max.Wheel Loading	kN	255	268	278	290	302	309	310	257	271	282	294	303	314	322	
电动机功率 Span	kW	128					136				158					
荐用钢轨 Crane Rail Recommended		QU100														
电源 Power Supply		三相交流 3-Phase A.C.50HZ 380V														



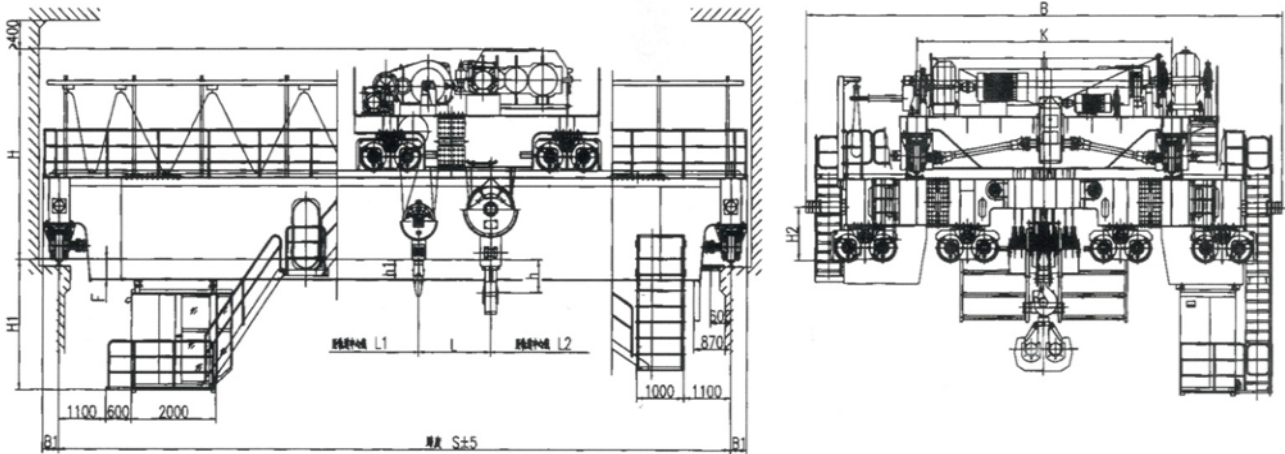
起重量 Cap	主钩 Main	t	100													
	副钩 Aux.		20													
跨度 Span		m	13	16	19	22	25	28	31	13	16	19	22	25	28	31
起升高度 Lifting Height	主钩 Main		18							18						
	副钩 Aux.	20							20							
工作制度 Duty			A5							A6						
速度 Speed	主起升Main	m/ min	3.1							3.9						
	副起升 Aux		7.2													
	小车运行 Crab travelling		33.9													
	大车运行 trolley travelling		61.7				61.7				618					
极限尺寸 limit dimension	S1	985														
	S2	2300														
	S3	2650														
	S4	3965														
主要尺寸 Main dimension	H	3434	3434	3436	3442	3442	3444	3446	3434	3436	3438	3444	3444	3446	3448	
	H1	950														
	H2	538	540	542	548	848	850	952	540	542	544	550	850	852	954	
	H3	2958	2960	2962	2968	3268	3270	3372	2960	2962	2964	2970	3270	3272	3374	
	H4	1330	1330	1328	1322	1322	1320	1318	1330	1328	1326	1320	1320	1318	1316	
	K	4400														
	B	8868														
b	310															
最大轮压 Max.Wheel Loading		kN	320	335	350	365	376	386	397	321	338	350	367	380	390	400
电机总功率 Total power		kW	136				154				158				174	
荐用钢轨 Crane Rail Recommended			QU100													
电源 Power Supply			三相交流 3-Phase A.C.50HZ 380V													



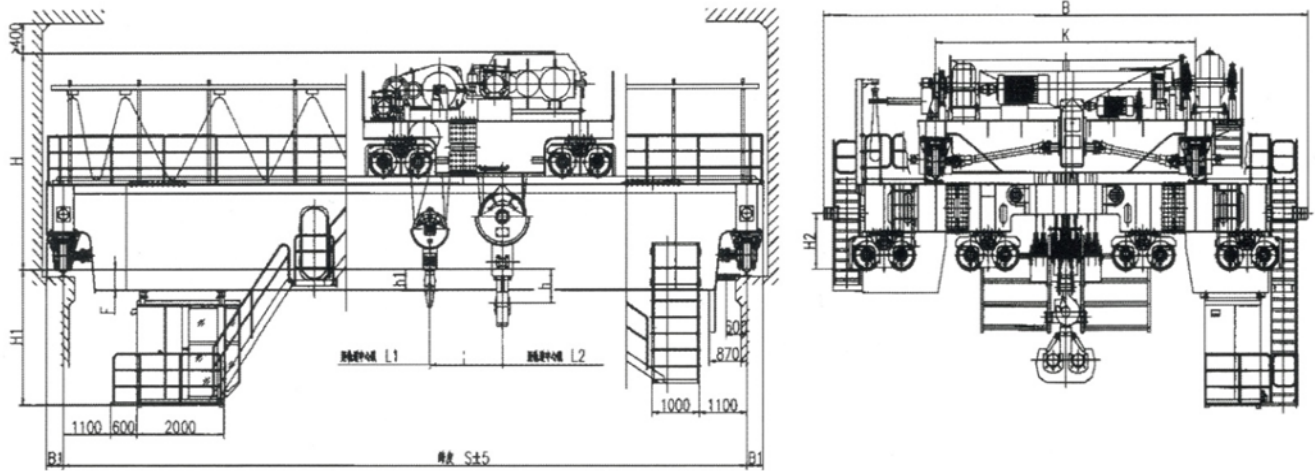
起重量 Cap	主钩 Main	t	125															
	副钩 Aux.		32															
跨度 Span		m	13	16	19	22	25	28	31	13	16	19	22	25	28	31		
起升高度 Lifting Height	主钩 Main		18															
	副钩 Aux.	20																
工作制度 Duty			A5							A6								
速度 Speed	主起升 Main	m/ min	3.5							3.6								
	副起升 Aux		7.5															
	小车运行 Crab travelling		33															
	大车运行 trolley travelling		59.56	59.2				59.7				67						
极限尺寸 limit dimension	S1	1200																
	S2	2500																
主要尺寸 Main dimension	H	mm	3676	3676	3680	3682	3686	3686	3688	3676	3678	3682	3684	3688	3688	3689		
	H1		950															
	H2		540	542	846	848	852	1052	1254	542	544	848	850	854	1054	1255		
	H3		1960	2962	3266	3268	3272	3472	3674	2962	2964	3268	3270	3274	3474	3675		
	H4		1560	1560	1556	1554	1556	1550	1548	1560	1588	1554	1552	1548	1548	1547		
	K		4400															
	B		8868				9008				8868				9008			
	b		310															
最大轮压 Max. Wheel Loading	kN	388	408	430	445	459	470	492	390	410	432	445	462	476	489			
电动机功率 Span	kW	179.5				197.5				194.5				210.5				
荐用钢轨 Crane Rail Recommended		QU100																
电源 Power Supply		三相交流 3-Phase A.C.50HZ 380V																



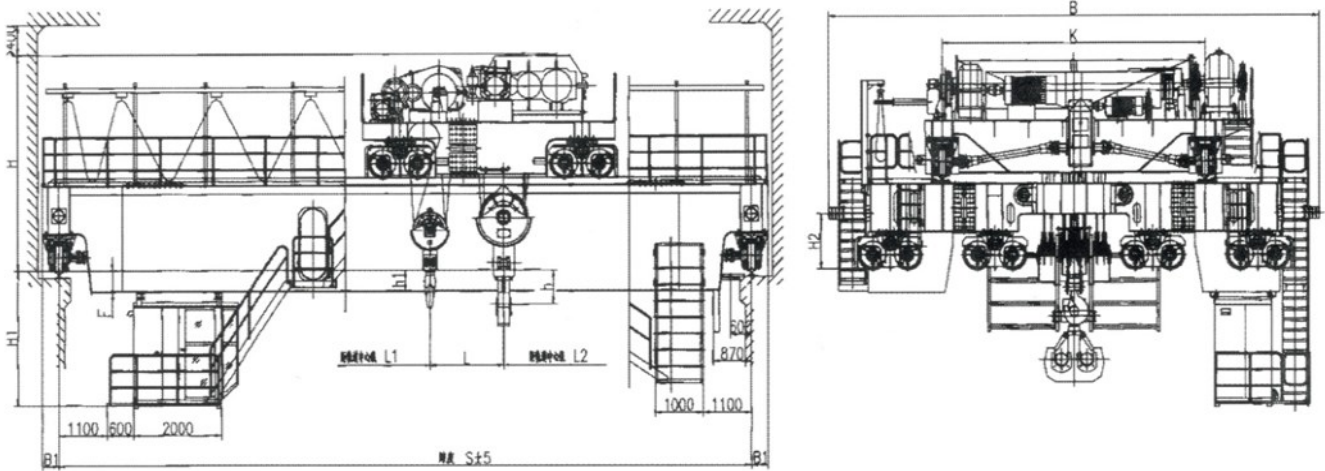
起重量 Cap	主钩 Main	t	150								160							
	副钩 Aux.		32								32							
跨度 Span		m	13	16	19	22	25	28	31	13	16	19	22	25	28	31		
起升高度 Lifting Height	主钩 Main		22								20							
	副钩 Aux.	24								22								
工作制度 Duty			A5								A5							
速度 Speed	主起升Main	m/ min	3.7								3.2							
	副起升 Aux		7.5								5.9							
	小车运行 Crab travelling		40								22.5							
	大车运行 trolley travelling		68								57							
极限尺寸 limit dimension	L1		980								1392							
	L2		2500								2727							
	L		1700								1825							
	h2		1200								535				533			
	h1		50								240				238			
主要尺寸 Main dimension	H		4600								4496				4498			
	H1		3000				3150				2857				2957			
	B	mm	9900								9900							
	K		4600								4400							
	B1		400								385							
	F		500				650				437				537			
最大轮压 Max. Wheel Loading	kN		262	283	294	304	312	319	326	272	293	300	315	324	331	338		
电机总功率 Total Power	kW	196	196	208	208	216	216	216	232				260					
荐用钢轨 Crane Rail Recommended		QU120								QU120								
电源 Power Supply		三相交流 3-Phase A.C.50Hz 380V								三相交流 3-Phase A.C.50Hz 380V								



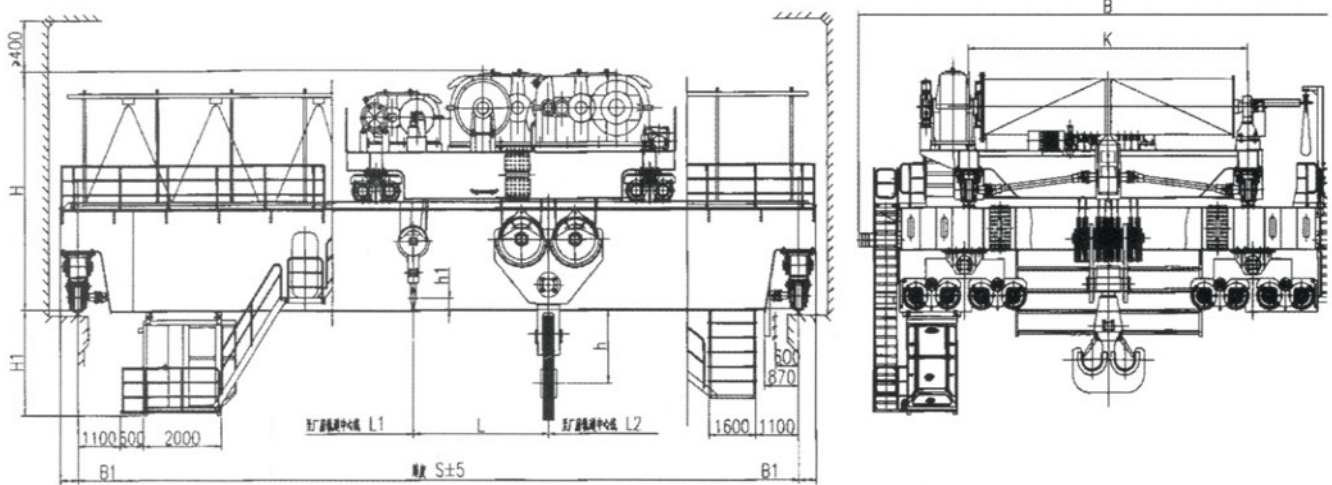
起重量 Cap	主钩 Main	t	200								250						
	副钩 Aux.		50								50						
跨度 Span		m	13	16	19	22	25	28	31	13	16	19	22	25	28	31	
起升高度 Lifting Height	主钩 Main		20								20						
	副钩 Aux.	22								22							
工作制度 Duty			A5								A5						
速度 Speed	主起升Main	m/ min	2.6								2.2						
	副起升 Aux		7.7								7.7						
	小车运行 Crab travelling		32								32						
	大车运行 trolley travelling		48								50						
极限尺寸 limit dimension	L1		1600								1600						
	L2		2800								3100						
	L		2000								2000						
	h		1500								1800						
	h1		700								1000						
主要尺寸 Main dimension	H	mm	5300								5300						
	H1		2740				2890				3150			3300			
	B		11200								12000						
	K		5000								6000						
	B1		400								450						
	F		320				470				650			800			
最大轮压 Max.Wheel Loading		kN	326	344	358	372	390	400	410	356	370	380	408	430	440	450	
电机总功率Total power		kW	239	239	263	263	263	279	279	239	239	263	263	263	279	279	
荐用钢轨 Crane Rail Recommended			QU120								QU120						
电源 Power Supply			三相交流 3-Phase A.C.50Hz 380V								三相交流 3-Phase A.C.50Hz 380V						



起重量 Cap	主钩 Main	t	300								350							
	副钩 Aux.		75								80							
跨度 Span		m	13	16	19	22	25	28	31	13	16	19	22	25	28	31		
起升高度 Lifting Height	主钩 Main		24								24							
	副钩 Aux.	26								26								
工作制度 Duty			A5								A5							
速度 Speed	主起升 Main	m/ min	2.4								2.2							
	副起升 Aux		6.8								6.8							
	小车运行 Crab travelling		28								28							
	大车运行 trolley travelling		42								42							
极限尺寸 limit dimension	L1		1700								1500							
	L2		3500								2800							
	L		2450								2400							
	h		1900								1500							
	h1		520								520							
主要尺寸 Main dimension	H	mm	5850								5850							
	H1		3000				3200				3000				3200			
	B		12100								12300							
	K		6000								6200							
	B1		450								450							
	F		500				700				500				700			
最大轮压 Max.Wheel Loading	kN	480	495	510	525	540	550	565	507	534	555	571	586	599	613			
电动机总功率 Total Power	kW	485	485	501	501	537	537	537	485	485	501	501	537	537	537			
荐用钢轨 Crane Rail Recommended		QU120								QU120								
电源 Power Supply		三相交流 3-Phase A.C.50Hz 380V								三相交流 3-Phase A.C.50Hz 380V								



起重量 Cap	主钩 Main	t	400							450						
	副钩 Aux.		80							100						
跨度 Span		m	13	16	19	22	25	28	31	13	16	19	22	25	28	31
起升高度 Lifting Height	主钩 Main		23							24						
	副钩 Aux.	25							26							
工作制度 Duty			A5							A5						
速度 Speed	主起升 Main	m/ min	2.6							2.1						
	副起升 Aux		5.1							4.7						
	小车运行 Crab travelling		31							27						
	大车运行 trolley travelling		45							42						
极限尺寸 limit dimension	L1	1600							1600							
	L2	3400							3400							
	L	3000							3000							
	h	1800							1800							
	h1	520							750							
主要尺寸 Main dimension	H	6500							6500							
	H1	3500			3700				3500			3700				
	B	12300							13500							
	K	6000							6500							
	B1	450							450							
	F	1000			1200				1000			1200				
最大轮压 Max.Wheel Loading	kN	620	650	680	700	720	735	755	651	688	718	739	758	777	791	
电动机总功率 Total Power	kW	608	608	624	624	640	640	640	608	608	624	624	640	640	640	
荐用钢轨 Crane Rail Recommended		QU120							QU120							
电源 Power Supply		三相交流 3-Phase A.C.50Hz 380V							三相交流 3-Phase A.C.50Hz 380V							



起重量 Cap	主钩 Main	t	500							550						
	副钩 Aux.		100							100						
跨度 Span		m	13	16	19	22	25	28	31	13	16	19	22	25	28	31
起升高度 Lifting Height	主钩 Main		20							22						
	副钩 Aux.	22							24							
工作制度 Duty			A5							A5						
速度 Speed	主起升 Main	m/ min	2							1.8						
	副起升 Aux		4.7							4.7						
	小车运行 Crab travelling		26							26						
	大车运行 trolley travelling		38							38						
极限尺寸 limit dimension	L1	1700							1700							
	L2	3500							3500							
	L	3200							3200							
	h	1600							1600							
	h1	750							750							
主要尺寸 Main dimension	H	6800							6800							
	H1	3000			3200				3000			3200				
	B	14400							14500							
	K	6500							6500							
	B1	450							450							
	F	500			700				500			700				
最大轮压 Max.Wheel Loading		kN	741	792	830	860	886	908	928	814	871	912	945	973	996	1012
电动机总功率 Total Power		kW	699	699	715	715	735	735	735	734	734	742	742	762	762	762
荐用钢轨 Crane Rail Recommended			Qu120							Qu120						
电源 Power Supply			三相交流 3-Phase A.C.50Hz 380V							三相交流 3-Phase A.C.50Hz 380V						