

SEVENCRAANE

Henan Seven Industry Co.,Ltd

Address: Changyuan, Xinxiang City, Henan province, China.

Email: info@sevencrane.com

Tel: (00)86-371-55576206

Web: www.sevencrane.com

Henan Seven Industry Co.,Ltd

European Type Double Girder Overhead Crane



SEVENCRA

Company profile

SEVENCRANE (Henan Seven Industry Co., Ltd) offers our customers with reliable, safe and high-performance solutions for industrial cranes, crane components and drives. SEVENCRANE serves a wide range of industries including machinery, metallurgy, power industry, railways, water conservancy, ports, mines, coal, petroleum, chemical industries, etc.

SEVENCRANE stands for first-rate service, cost-effective, high quality. Based on our brand commitment, we provide butler-style services to our customers at all stages, and fully consider the solutions for the purchase, production, transportation, installation and after-sale process of cranes.

Our customers appreciate our reliability and professionalism. Our sales staffs are trained in professional crane knowledge and customers can communicate with them on technical issues directly.

Values and vision

SEVENCRANE is committed to the highest efficiency, best results and best service. Choose SEVENCRANE to give you peace of mind and focus on your business.

Our core values: First class service—Safety—Efficient—Reliable

" Tell sevencrane your needs and leave the rest to us. "

Business area

Spare parts and service	Industrial cranes
SEVENCRANE provides components and maintenance services for all types of cranes to help customers increase productivity and perform crane maintenance or assembly.	SEVENCRANE serves a wide range of industries including machinery, metallurgy, power industry, railways, water conservancy, ports, mines, coal, petroleum, chemical industries, etc. We offer cranes, solutions of crane and material handling solutions to a wide range of customers.
Product: SEVENCRANE can provide: Rail system, Bus bar, Remote control, Wire rope, All kinds of hook block, Wheels, Couplings, Drums, Buffers, End carriage, Pulley, Grab buckets, Crane magnet. We also provide crane system design, crane installation and training for our customers, and have perfect after-sales service.	Product: SEVENCRANE provide customers in various industries: Gantry crane, Bridge crane, Jib crane, Electric hoist, Winch, European type crane.

European type double girder overhead crane

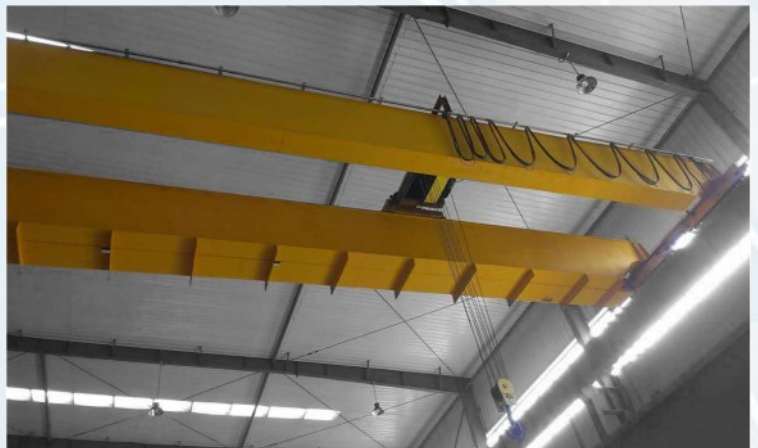
Overview

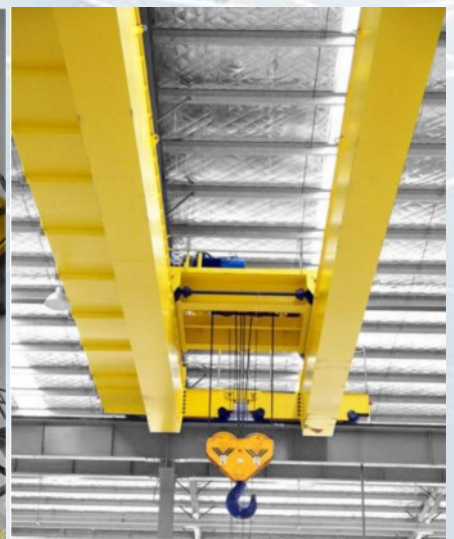
The European type double girder overhead crane is mature, reliable, easy to operate, stable in operation and advanced in technology. It is a mature product of our company for many years.

Compared with ordinary double girder overhead crane, this crane is 10%~35% lighter in dead weight, wheel pressure can be reduced by about 10% to 30%, and its own height is also reduced by 20% to 40%, which greatly reduces the cost of the plant, and High-quality, high-quality parts, durable, safe and reliable, the workload of the company's normal maintenance and repair is reduced, while the total installed power (energy consumption) is also reduced, and the cost of use is saved.

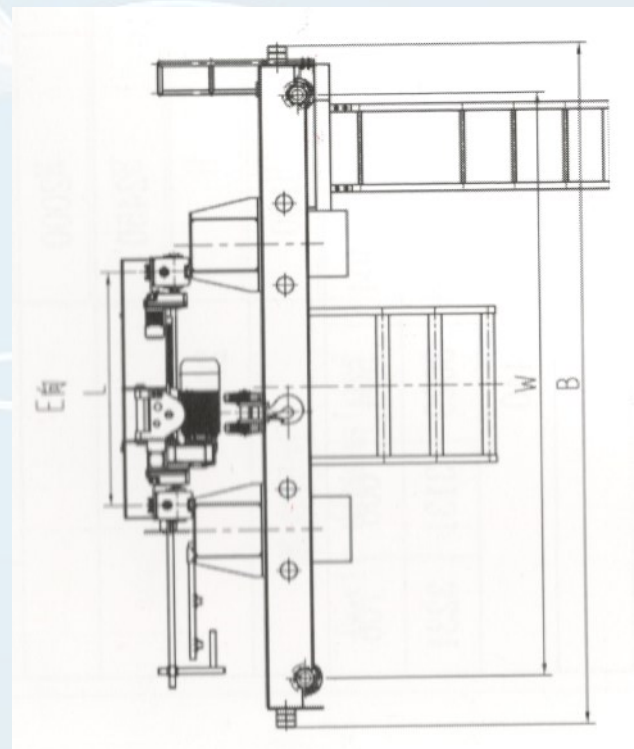
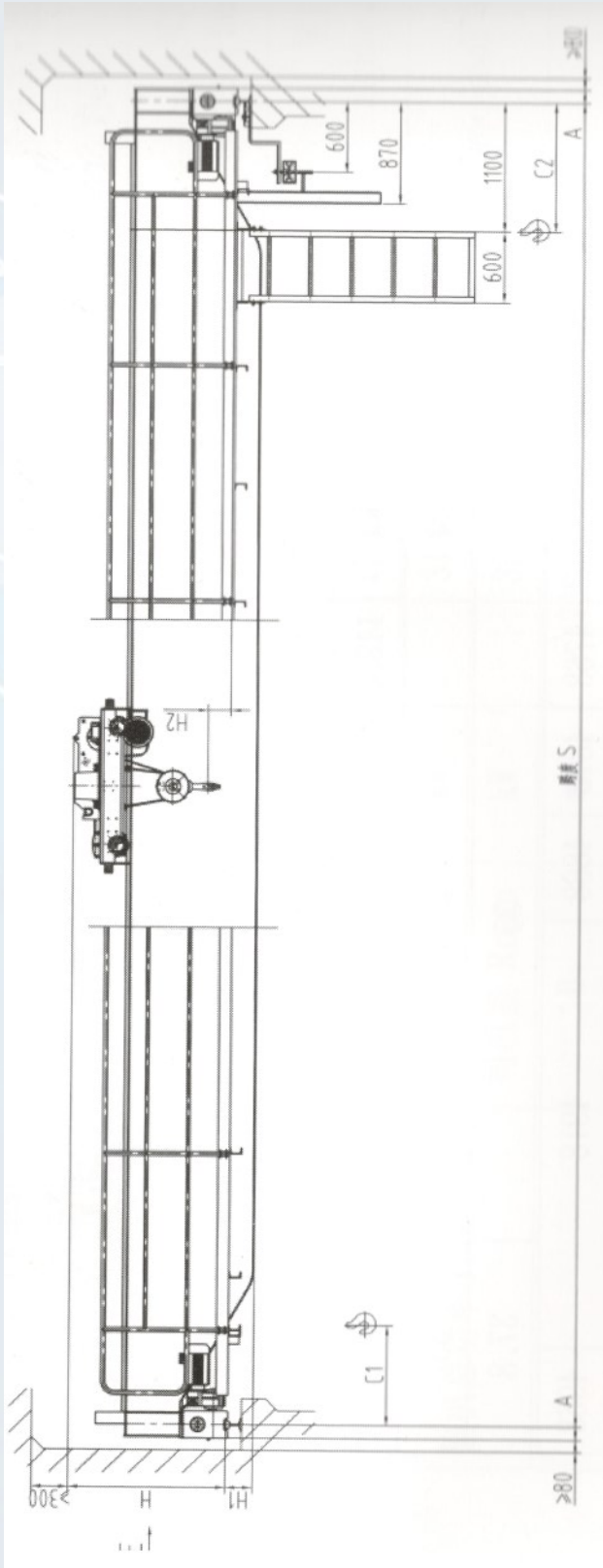
Specification

1. Load capacity: 3 ton~100 tons
2. Span: 4.5m~31.5m
3. Lifting height: 3m~30m or according to customer request]
4. Model of electric hoist: European type hoist trolley
5. Traveling speed: 2~20m/min, 3~30m/min
6. Lifting speed: 0.8/5m/min, 1/6.3m/min, 0~4.9m/min
7. Working duty: FEM2m, FEM3m
8. Power source: 380v/400v/415v/440v/460v, 50hz/60hz, 3 phase
9. Width of track: 37~70mm
10. Control model: cabin control, remote control, pendent control





GENERAL DRAWING





起重量	跨度 m	起升高度 m	工作级别	起升速度 m/min	小车速度 m/min	大车速度 m/min	最大轮压 kN	总重 kg	主要尺寸							
									H	H1	H2	C1	C2	L	W	B
5	10.5	6 9 12	A5	50.8	2.0~20	3.0~30	40	5135	1242	0	270	852	1100	1600	3600	4974
	13.5						43	5945		50						
	16.5						46	7066		100						
	19.5						49	8307		100						
	22.5						54	10254	1342	150	370					
	25.5						58	11569	150							
	28.5						64	13875	200							
	31.5						70	15704	300	4000					5374	
10	10.5	6 9 12	A5	50.8	2.0~20	3.0~30	65	5282	1277	50	195	852	1100	1600	3600	4974
	13.5						70	6652		150						
	16.5						76	8246		200						
	19.5						79	9775		100						
	22.5						85	11423	1429	250	347					
	25.5						90	13566	300							
	28.5						96	16173	1479	300						
	31.5						103	18580	352	397					4000	5374
16	10.5	6 9 12	A5	40.66	2.0~20	3.0~30	98	6750	1372	100	88	870	1270	1700	3600	4974
	13.5						103	8060		200						
	16.5						109	10188		152						
	19.5						62	12563		252						
	22.5						69	14835	1522	352	238					
	25.5						73	17799	452							
	28.5						78	19921	552							
	31.5						83	22348	870	1270				2000	3978	5352
20	10.5	6 9 12	A5	40.66	2.0~20	3.0~30	65	7288	1486	50	196	870	1270	2000	3928	5302
	13.5						69	8944		200						
	16.5						72	10875		298						
	19.5						75	12458		1588						
	22.5						79	15519	1638	352	348					
	25.5						82	18168	452							
	28.5						86	21429	552							
	31.5						89	23987	870	1270				2000	4028	5402
32	10.5	6 9 12	A5	3.30.8	2.0~20	3.0~30	99	9320	1657	152	-143	1322	1322	2300	4600	5974
	13.5			105			11095	252								
	16.5			108			13652	254								
	19.5			112			15989	254								
	22.5			116			18548	1757	404	-43						
	25.5			120			22029	454								
	28.5			125			25094	1808	557							
	31.5			130			28565	8	657		4600				6074	